

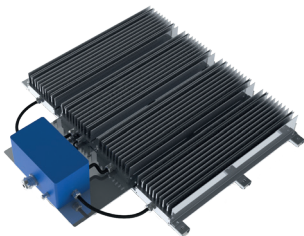
# Compact Braking resistor BW 155 - Combination

BW 155/4.000 - 30.0000 W

## Advantages

- Protection class IP20 / IP65 / IP66
- Small dimensions at high output
- Fast connection
- Short-circuit proof
- Very good heat dissipation
- High-resistance at overload
- Options available with terminal covers and temperature switches
- Installation also possible outside the control cabinet

Compact Braking resistor BW 155-combination



## Technical data

Compact Braking resistor BW 155 - combination				
Type	Resistance R [Ohm] to the E12 series*	Continuous output P [W] IP20	Continuous output P [W] IP65, IP66	max. operating voltage U [V]
BW 155 / 4000 / IP...	1- 180	4000	3000	900
BW 155 / 5000 / IP...	1 - 150	5000	3750	
BW 155 / 6000 / IP...	1 - 120	6000	4500	
BW 155 / 7500 / IP...	1 - 100	7500	5600	
BW 155 / 9000 / IP...	1 - 82	9000	6750	
BW 155 / 10000 / IP...	1 - 68	10000	7500	
BW 155 / 12000 / IP...	1 - 56	12000	9000	
BW 155 / 15000 / IP...	1 - 47	15000	11250	
BW 155 / 18000 / IP...	1,5 - 39	18000	13500	
BW 155 / 22000 / IP...	1,5 - 33	22000	16800	
BW 155 / 24000 / IP...	1,8 - 33	24000	18000	
BW 155 / 27000 / IP...	2,2 - 27	27000	20250	
BW 155 / 30000 / IP...	2,2 - 27	30000	22500	

\*Other resistance values on request.

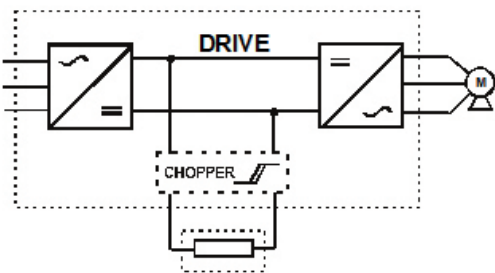
For low resistance values, the conductor cross-section is adapted to the current.

# Mechanical data

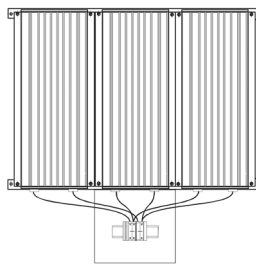
Compact Braking resistor BW 155 - combination									
Type	Dimensions						Cable gland	Connection clamp	Design
	L1 [mm]	L2 [mm]	B1 [mm]	H1 [mm]	H2 [mm]	D [mm]			
BW 155 / 4000 / IP...	750	500	420	390	95	8,5	M25	10 mm <sup>2</sup>	BF 1
BW 155 / 5000 / IP...	880	630	420	390	95	8,5	M25	10 mm <sup>2</sup>	BF 1
BW 155 / 6000 / IP...	970	720	420	390	95	8,5	M25	10 mm <sup>2</sup>	BF 1
BW 155 / 7500 / IP...	880	630	590	560	95	8,5	M25	10 mm <sup>2</sup>	BF 2
BW 155 / 9000 / IP...	970	720	590	560	95	8,5	M25	10 mm <sup>2</sup>	BF 2
BW 155 / 12000 / IP...	970	720	770	740	95	8,5	M32	16 mm <sup>2</sup>	BF 3
BW 155 / 15000 / IP...	970	720	940	910	95	8,5	M32	16 mm <sup>2</sup>	BF 4
BW 155 / 18000 / IP...	970	720	2x590	2x560	95	8,5	M32	35 mm <sup>2</sup>	2x BF2
BW 155 / 24000 / IP...	970	720	2x770	2x740	95	8,5	M32	35 mm <sup>2</sup>	2x BF3
BW 155 / 27000 / IP...	970	720	3x590	3x590	95	8,5	M32	35 mm <sup>2</sup>	2x BF2
BW 155 / 30000 / IP...	970	720	2x940	2x910	95	8,5	M32	35 mm <sup>2</sup>	2x BF4

Typical applications: Braking resistor for drives with frequency converters of high output, installation close to the frequency converter: Test voltage: 2,5 kV AC, Ambient temperature: -10...+40 °C

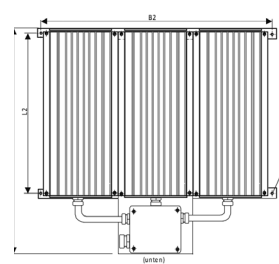
Circuit example



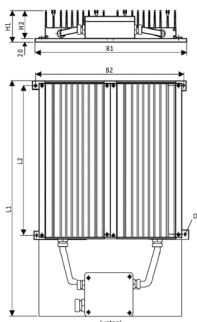
Design IP20



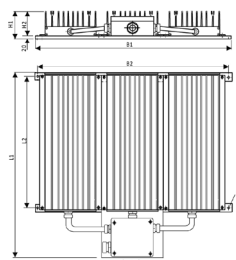
Design IP65



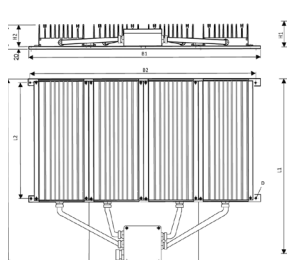
Dimension drawing, Design 1



Dimension drawing, Design 2



Dimension drawing, Design 3



Dimension drawing, Design 4

