

Compact Braking resistor

BW D 330

BW D 330/15.000 - 60.000 W

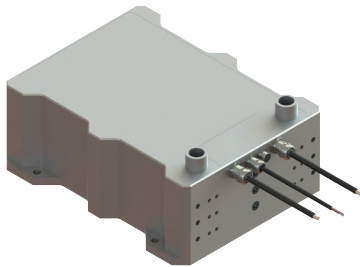
Liquid-cooled braking resistor,
max continuous output: 60.000 W

The REO braking resistor converts excess braking energy into useful heat and is thus ideally suitable for electrical or hybrid drives. The water cooling makes an additional space saving of up to 88% possible as compared to a traditional air-cooled braking resistor. As an extra feature, the resistor can easily be connected with drip-free quick fasteners.

Advantages

- Protection class up to IP69K
- 88% space saving
- Non-drip quick-release connectors
- Liquid Cooling
- Low weight
- Low surface temperature

Compact Braking resistor BW D 330



Technical data

Compact Braking resistor BW D 330			
Type	Resistance values [Ohm]*	Continuous output [W]	Operating voltage [V]
BW D 330 / 15.000	4,2 - 43,5	15000	800
BW D 330 / 30.000	2,1 - 21,5	30000	
BW D 330 / 45.000	1,4 - 14,5	45000	
BW D 330 / 60.000	1,6 - 11	60000	

Mechanical data

Compact Braking resistor BW D 330							
Type	Dimensions						
	L1 [mm]	L2 [mm]	B1 [mm]	B2 [mm]	D1 [mm]	D2 [mm]	H1 [mm]
D 330 / 15.000	390	250	315	285	12,5	G3/4	57
D 330 / 30.000	390	250	315	285	12,5	G3/4	87
D 330 / 45.000	390	250	315	285	12,5	G3/4	117
D 330 / 60.000	390	250	315	285	12,5	G3/4	147

Dimension drawing

